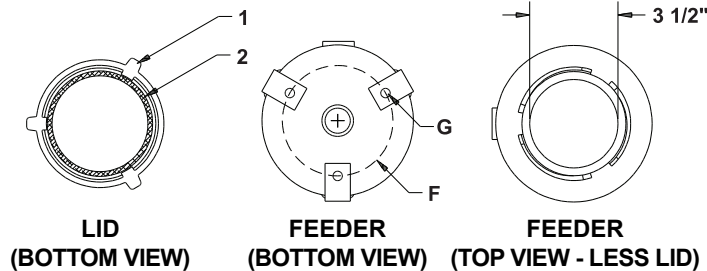


# J.L. WINGERT CO.

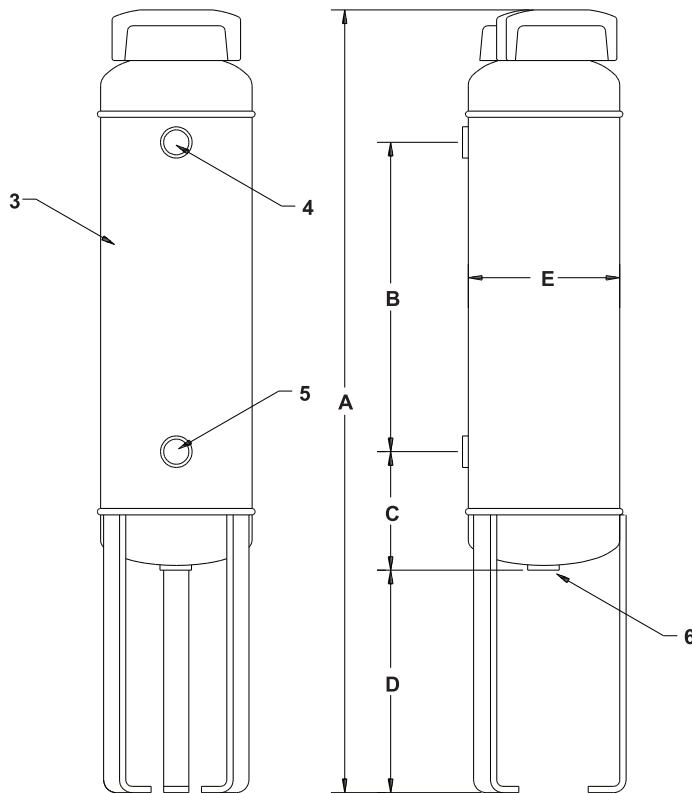
## Specification Sheet DOME BOTTOM BYPASS FEEDERS MODEL DB-[ ]HD

SS030002.C 05/16



### SPECIFICATIONS

KEY	PART	DESCRIPTION
1	3071	<b>CLOSURE:</b> 3 1/2" cast iron, 1/4 turn closure, (O-ring included)
2	3072	<b>O-RING:</b> Buna-N O-ring 200° F
3		<b>BODY:</b> Carbon steel
4		<b>OUTLET:</b> 3/4" FNPT
5		<b>INLET:</b> 3/4" FNPT
6		<b>DRAIN:</b> 3/4" FNPT
<b>MAX. PRESSURE</b>		200 PSI (13.7 BAR)
<b>MAX. TEMPERATURE</b>		200° F (93° C)



### VOLUME (FILL CAPACITY)

MODEL	GALLONS	LITERS
DB-2HD	2.39	9.04
DB-5HD	6.30	23.85
DB-12HD	13.28	50.27
DB-18HD	19.74	74.72

### DIMENSIONS

KEY	DB-2HD	DB-5HD	DB-12HD	DB-18HD
A	30 3/4"	30 1/2"	51 1/4"	70 1/8"
B	12 1/2"	10 5/8"	31"	44"
C	4 3/8"	5 7/8"	5 7/8"	10 1/2"
D	8 3/4"	7 3/4"	7 3/4"	7 1/2"
E	6"	10"	10"	10"
F	4"	8"	8"	8"
G	3/8"	3/8"	3/8"	3/8"
<b>WEIGHT</b>	22 lbs. approx.	36 lbs. approx.	62 lbs. approx.	86 lbs. approx.
<b>SHIPPING DIMENSIONS</b>	6" x 6" x 32"	10" x 10" x 32"	10" x 10" x 53"	10" x 10" x 72"

Note: All dimensions are +/- 1/8". All weights are approximate. All dimensions are subject to change without notice.

MANUFACTURING: Mixers, Bypass Feeders, Filter Feeders, Bromine Feeders, Sample Coolers, Sludge Traps, Separators, Separator Systems, Tank Stands, Tank Package Systems, Glycol Feed Systems, Coupon Racks, Control Stations, NEMA Enclosures, Custom Packaged Systems and Specialty Welding

P.O. Box 6207 | Garden Grove, CA 92846-6207 / 11800 Monarch St. | Garden Grove, CA 92841-2113 | Phone (714) 379-5519 | Fax (714) 379-5549  
Northern California Region | Phone (510) 487-5310 | Southwest Region | Phone (602) 470-1015 | Email: customerservice@jllwingert.com

[www.jllwingert.com](http://www.jllwingert.com)